

( )

INTERSTATE COUNCIL FOR STANDARDIZATION, METROLOGY AND CERTIFICATION  
(ISC)

**34532—  
2019**



2019

1.0 «  
 1.2 «  
 »  
 1 «  
 »  
 «  
 »  
 «  
 »  
 2 144 «  
 »  
 3  
 ( 28 2019 . 55)

:

* no ( 3166) 004-97	( 3166)004-97	
	AM BY KG RU	

4 14  
 2019 . 1147- 34532—2019  
 1 2020 .  
 5 26798.1—96 26798.2—96



1	.....	1
2	.....	1
3	( I«G ) .....	2
3.1	.....	2
3.2	.....	3
3.3	.....	4
3.4	.....	5
3.5	.....	6
3.6	.....	6
3.7	.....	7
3.8	.....	11
3.9	.....	11
3.10	.....	11
4	I«G I-H .....	13
4.1	.....	13
4.2	.....	14
4.3	.....	14
4.4	.....	16
	( ) , 3.....	20
	( ) , 4.....	21
8	( ) .....	22





{www.easc.by}

**3**

( I-G I-H):

3.1

3.1.1

50 %.

20 ±2 °C

3.1.2

30515.

3.1.3

3.1.4

50 %.

3.1.5

09

6613.

( , , )

3.1.6

11.

3.1.7

3.1.8

90 %.

( )

20± 1

( )

3.1.9

11

±1 (±1 )

3.1.10

3.1.11

3.1.12

1.

1

Twn	< / »	350 600		
			20x20*100	40*40x100
1. II	0,50	350 600	700	1200
111-06	0.60-1.30	—	300—500	600—800
111-	0.30-0.40	—	800	1600

1

1

2

7

III

3.2

3.2.1

3.2.1.1

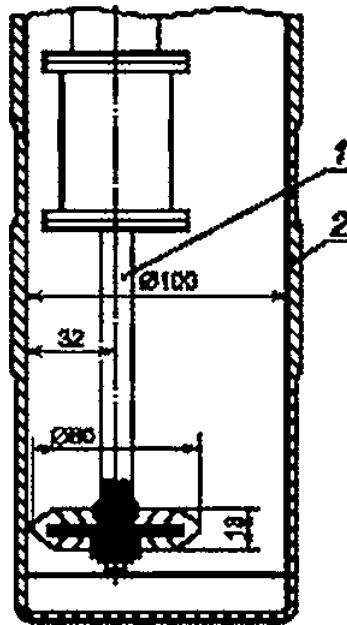
3.2.1.2

OIML R 76-1.

500 {15001 100} / ;  
900 3. -

1.

(18015)



i— ; 2—

1—

3.2.2

3.2.2.1

3.2.2.2

3.1.5.

3.2.2.3

1.

(15001100) /  
(30015)

1.

(18015)

3.2.3

3.2.3.1

( )

2.

	*							
	22	12	22	12			—	—
	30	13	75	13			22	13
	75	13	120	15	40	16	25	75

3.2.3.2

3.2.3.3

III

2.

3.3

3.3.1

3.3.1.1

3.3.1.2

10015<sup>3</sup> ( 2).

3.3.1.3

OIML R 76-1

±0,01

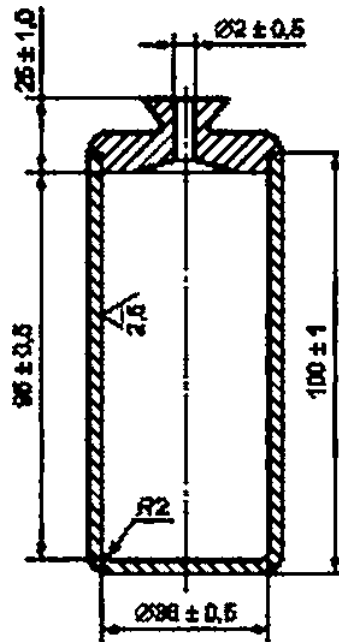
3.3.2

3.3.2.1

3.3.2.2

3.3.2.3

3.2.2.



2—

3.3.2.4



3.3.3

... / 3,

$$\rho_u = \frac{m_2 - m_1}{V}$$

, —  
2 —  
V —

III

0.004 /  
/ ,

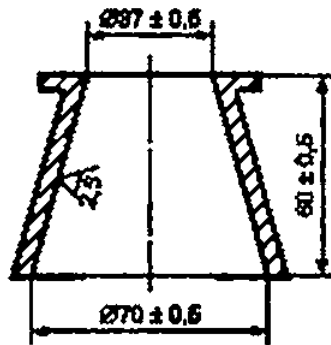
0.01 / 3.

3.4

3.4.1

3.4.1.1

3.4.1.2 Форма-конус (рисунок 3).



3 —

3.4.1.3

— 250

5 70

3.4.1.4

427.

3.4.1.5

166.

3.4.1.6

3.4.2

3.4.2.1

3.4.2.2

3.2.2.

3.4.2.3

5

3.4.2.4

3.4.2.5

10

3.5

3.5.1

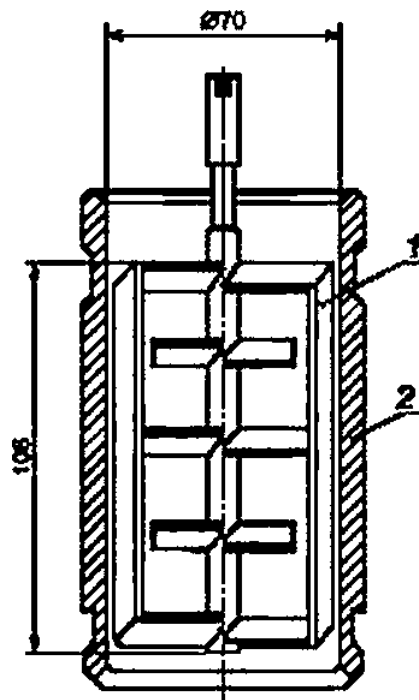
3.5.1.1

3.5.1.2

3.5.1.3

(15015) /

4.



1 — попастное устройство; 2 — стакан

4 —

3.5.2

3.5.2.1

3.5.2.2

3.1.13.2.

3.1.14.

3.5.2.3

10

3.5.2.4

30

3.6

3.6.1

3.6.1.1

3.6.1.2

250

3.6.1.3

1770

230

20

250

0.2

29227.

3.6.2

3.6.2.1

32.2.

3.6.2.2

250<sup>3</sup>

3.6.2.3

2 ± 5

20<sup>3</sup>

3.6.2.4

0.1

0.2

3.7

3.7.1

3.7.1.1

3.7.1.2

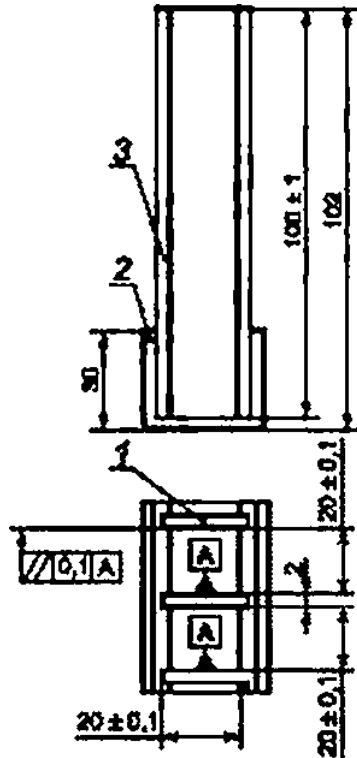
40\*40x160

30744.

3.7.1.3

20\*20\*100

( 5).



t — (3.); 2 — (<1.); 3 — (2.)

5 — 20\*20\*100

3.7.1.4

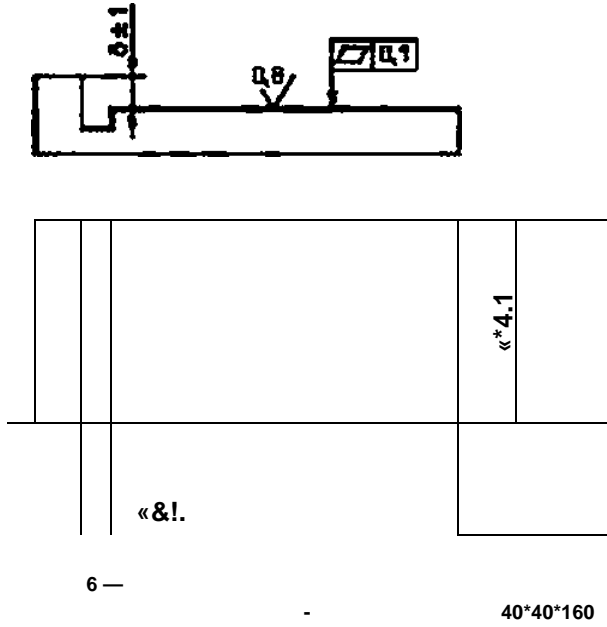
28840

500

3.7.1.5  
40\*40\*160 [

60 HRC.

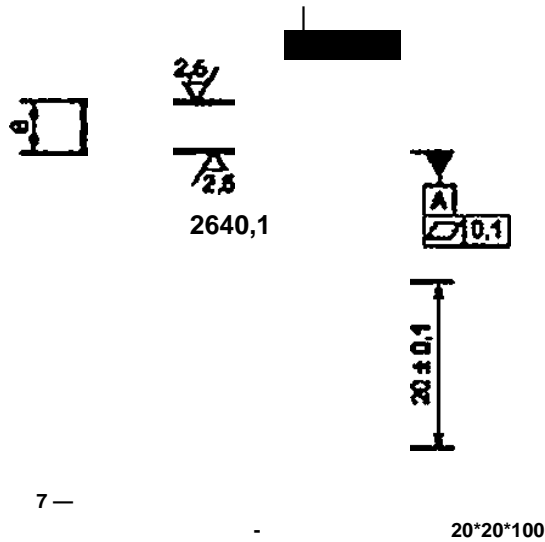
10 (4010,1) (4010.1) }  
56—61 HRC  
6.



20\*20\*100

56-61 HRS

7.



3.7.1.6  
40\*40\*160 20\*20\*100

26840

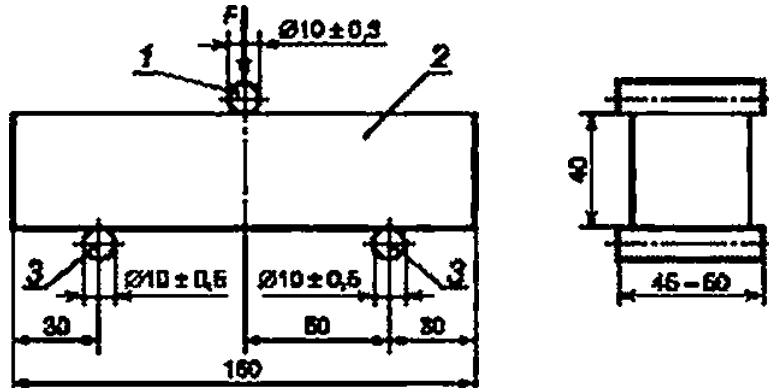
( 8 9)

(50110) /  
20\*20\*100

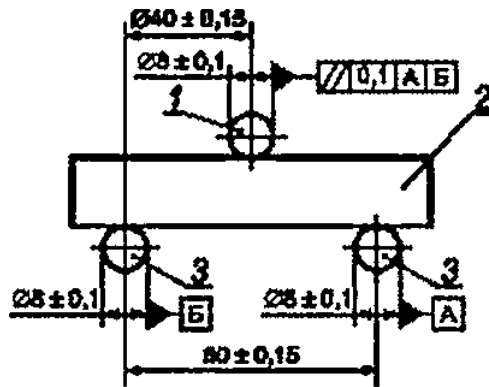
40\*40\*160 (1512) /

11%.

55 HRS.



t— ; 2— ; 3—  
8— -  $40 \times 40 \times 160$



— ; 2— ; 3—  
9— -  $20 \times 20 \times 100$

3.7.1.7 ( )

30744.

3.7.1.8

2 " /

$\pm 3 \text{ }^\circ\text{C}$ .

3.7.1.9

2;

:

2 " / ;

$\pm 5 \text{ }^\circ\text{C}$ ;

-

•

-

-

-

3.7.2

$\pm 15 \%$ .

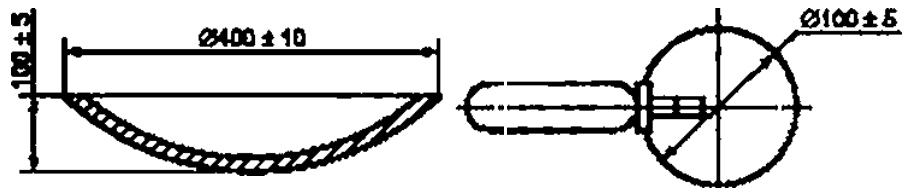
3.7.2.1

3.2.2.

1

5

10.



10—

3.7.2.2

30744.

1

3.7.2.3

(2411)

3.7.2.4

2.

(24\*1)

1 30

1

(20±2)

2

3.7.2.5

(2012)

1 30

8.2.3

3.6.2.4

30

3.7 3.8.

3.7.3

3.7.3.1

20x20x100

3.7.3.2

30

3.1.13.2,

2.

3.7.3.3

75 X

3.7.3.4

(2012) X.

(3015)

3.8 3.9

2 30

3.8								
3.8.1						40*40x160		
30744.								
3.8.2						20*20*100		
3.8.3								
3.8.3.1								
$F$ —								
$l$ —								
$b$ —								
3.8.3.2				0.1			10 %	
							10 %	
						.8		
3.9								
3.9.1				3.8				
30744.								20*20*100
3.9.2		20*25						
		$l?$						
$S_{nn}$ —					2.			
3.9.3							0.1	
3.9.4							10 %	
							10 %	
						.8		
3.10								
3.10.1								
3.10.1.1								
3.10.1.2		6507.						
3.10.1.3						( 11 — 17).		
							50.8	
							88.9	
(1000± 1) ,				18.				
(2,0±0.3)								
3.10.1.4								
				2.				

3.10.1.5

(27 ±3) °C.

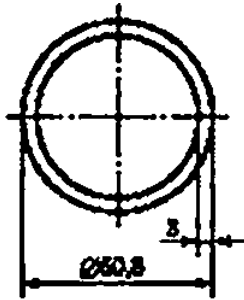


Рисунок 11 — Внутреннее кольцо

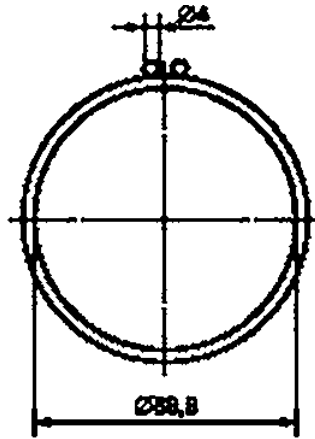


Рисунок 12 — Внешнее кольцо

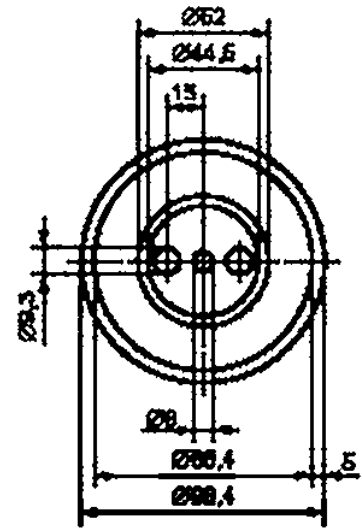


Рисунок 13 — Основание формы

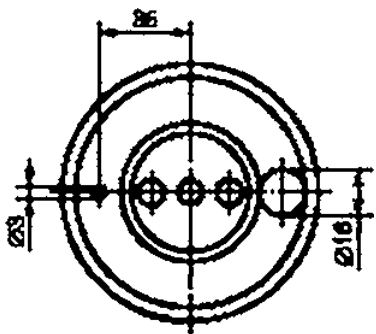
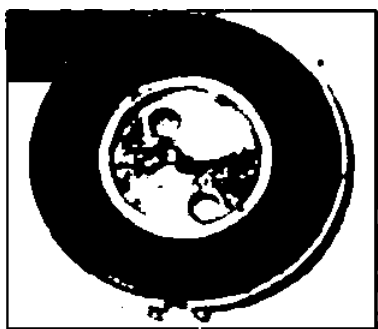


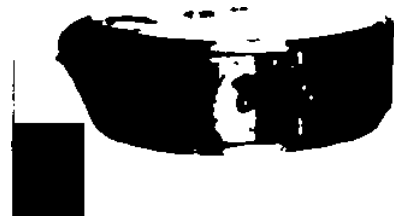
Рисунок 14 — Крышка формы



15 — ( )

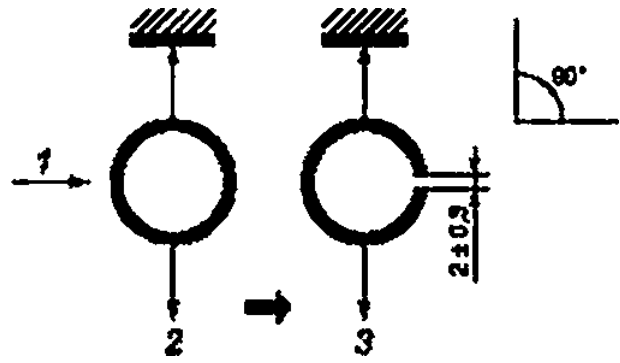


16 — ( ) 8



17 — ( )





f — : 2 — 0 . 3 — <100011] 18 —

3.10.2  
3.10.2.1

3.10.2.2

3.10.2.3

3.2.2,

16

3

3.10.2.4

0.02

3.10.2.5

3.10.2.6

3.10.2.7

1. %.

$$I = 0.358(U)$$

(4)

0.358 —

3.10.2.8

0.1 %.

4

I-G 1-

4.1

4.1.1

(23±3) "

50 %.

4.1.2

30515.

3.1.

4.1.3

6709.

4.1.4  
4.1.5  
3.

3

1000	±1.0	200	±0.20
500	±0.50	100	±0,10
300	±0.30	50	±0.05

4.1.6

4.1.7

4.2

4.2.1

4.2.1.1

OIML R 76-1.

0.1 10

0.1 %

0.01

4.2.1.2

4000 / 1,14  
12000 /

10 %.

4.2.2

4.

4

	( )		
I-G	0.44	349±0.5	792 ±0.5
1-	0.38	327±0.5	860±0,5

60

(23±1) \*

60

(23±1)

15

(12000±500) / ;

(4000±200) /

(35± 1 >

4.3

4.3.1

35.6

52 "

: 6 2/ 79 2/ 36 " ;

- : 1.9 / ( ) 2.5 / ( );
  - : 0,112 / ( ) 0.138 ( ):
  - : 0,83 0.93.
- (150± 15) / .

3 ° / , ±2 . ±30 / .

4.3.2

4.3.2.1

4.2.2.

4.3.2.2

4.3.2.3

4.3.2.4

4.3.2.5

45 89

4.3.3

4.2.2

5 ± 15 .

4.3.4

5 6.

5

6.9±0,7	27±1	6	28±1	35.6±0.7	52±1

6

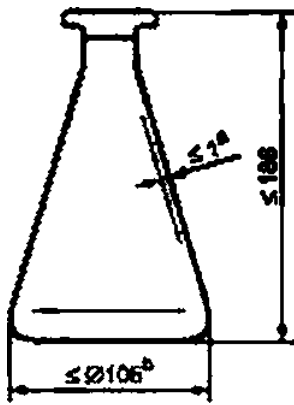
	0.7	. " . a t
0	6.9	27
2	9.0	28
4	11.1	30
6	13.1	32
8	15.2	34
10	17.3	36
12	19.3	37
14	21.4	39
16	23.4	41
18	25.5	43
20	27.6	44
22	29.6	46
24	31.7	48
26	33.8	50
28	35.6	52

4.3.5 15 30 1581. -  
 ,  
 4.3.6 100 . -

4.4  
 4.4.1  
 4.4.1.1 -  
 -

(27±2)  
 150 / ± 15 / -  
 ±30 / -

4.4.1.2 4.2.1.  
 4.4.1.3 500 ( 19).  
 4.4.1.4 0.1 .



19—

4.4.2  
 4.4.2.1  
 , 4.2.2.  
 4.4.2.2

4.4.2.3 20 1 30  
 (27±2) °C  
 4.4.2.4 1 G (790±5)  
 (760±5) 500

4.4.2.5  
 (23±3) .

4.4.2.6 2 ± 5

±0,1

4.4.2.7

, %.

-^ -100.

(5)

V—

—

0.38 1.91 / 3

G

1,98 / 3

0.44;  
(3,18±0.04) / 3,

4.5

4.5.1

4.5.1.1

50\*50\*50

55.

7.

7

	—	< 0,025	<0.05
	50.00*	10,13	10,50
( )	50.00*	+0.25 -0.13	0.25 -0.38
( )	90.0	10.5	
	—	0.025	
*	50.80 (2 )		

4.5.1.2

500

2 %

4.5.1.3

66 \*

11,7 "

4.5.1.4

6

4.5.1.5

27±3



0.05 .

8.

8

	. *	1S .
G.	38	2.1
	60	10,3

4.5.3.2

( )

,

3

.1.

.1

( )	»	
-		
	,	8
-		,
		,
-		,
	8	-
		,
		,



( )

4

.1.

	*		
	1	—	—
	1	( , )	10 % ±200 / 4000 / ±500 / 12000 / ±30 /
	1 » 1	( ) , - . » 1	±2* ±15 / ±30 <
	1 1 1 1	( ) , - . 17 .34 52 ) ( ) 1 1	±2* ±1.7 ±15 / ±30 /
	1 2	, ( - ) . , ( ) -	—
- -	1	( ) , - .	±2'
-	1	( ) , - .	±2 "
- -	1		±2 %

( )

.1

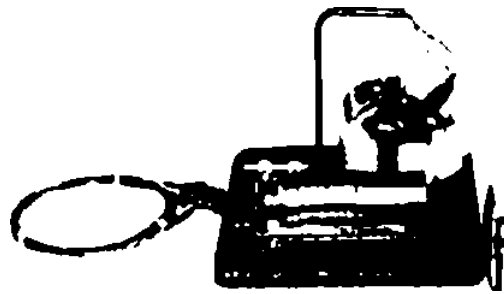
( )

.2

.2 —

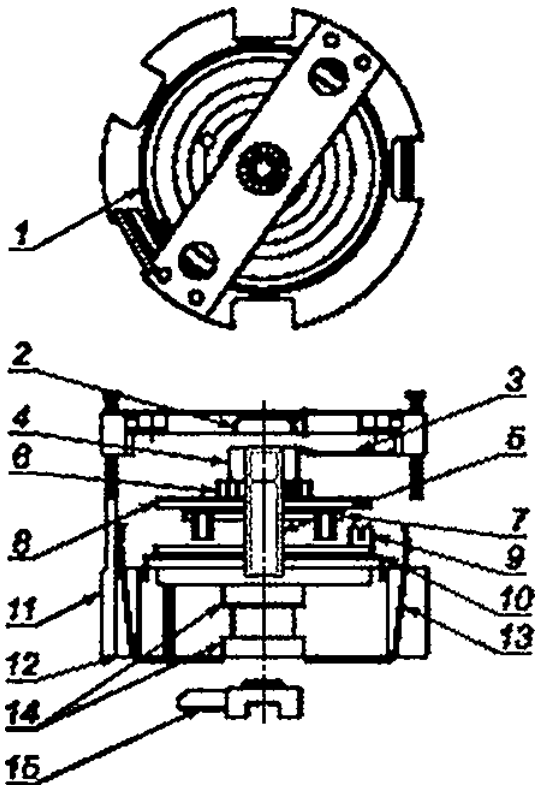
( )

( .1).



- 78.2 \* 20,02

( .1)



f— ; 2— ; 3— . 4— ; 5— ; 6— ; 7— ; 8— ; 9— ; 10— ; 11— ; 12— ; 13— ; 14— ; 15— . If—

— 5211 \*) ( -

260	50	915
520	100	2215
780	150	3515
1040	200	4815
1300	250	6115
1560	300	7415
1820	350	8715
2080	400	10015
*		-

